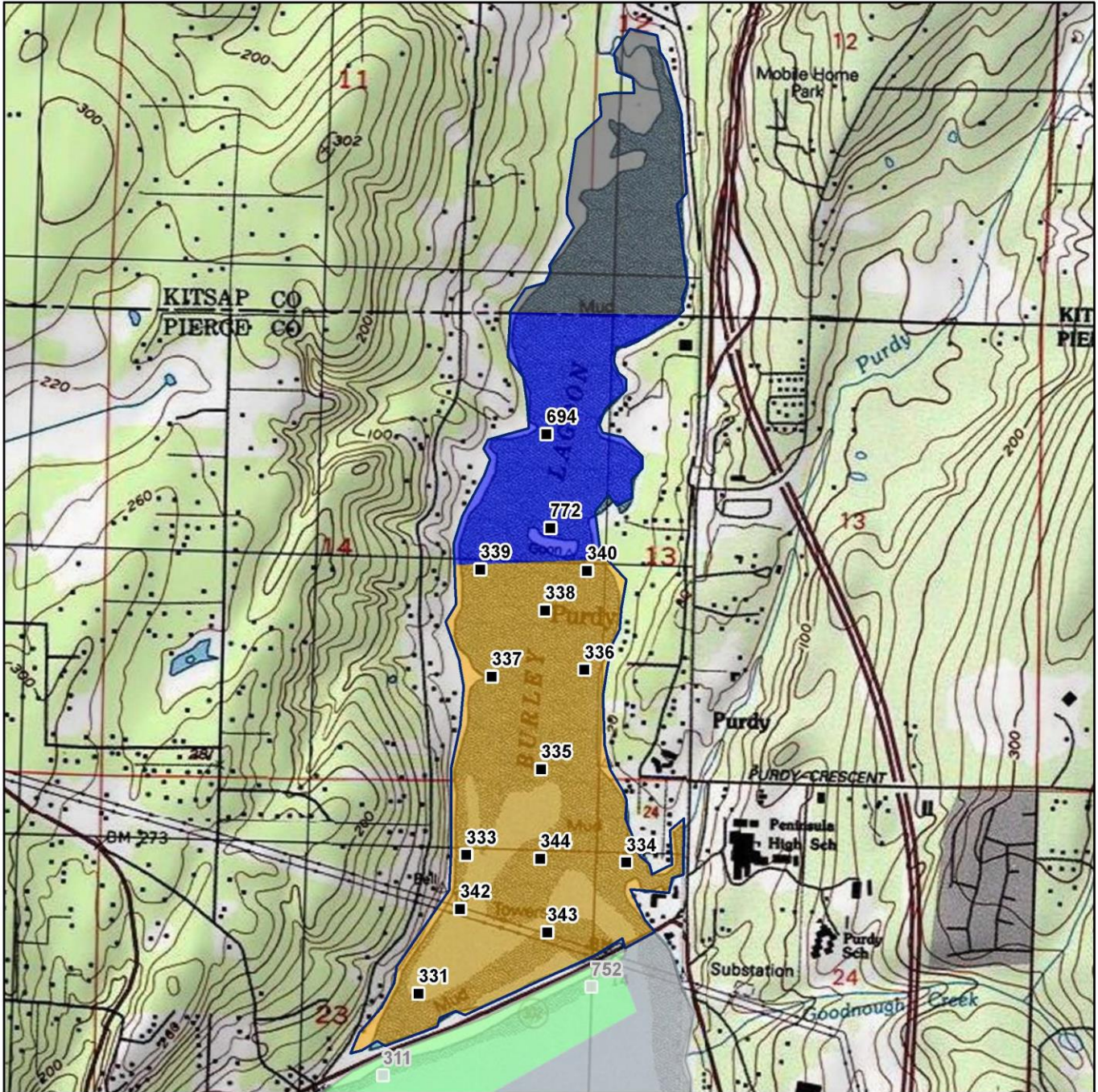
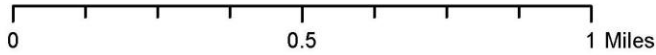


# Burley Lagoon Water Quality Summary (January 2023)

 Burley Lagoon

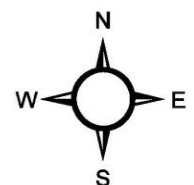


Date Updated: 7/11/2018



## Classification      Sampling Stations

- Approved
- Conditional
- Prohibited
- Restricted
- Unclassified



\* Some sampling stations are highlighted with grey box for ease of reading.

## Burley Lagoon Water Quality Summary (January 2023)

### Table 1: Summary of Marine Water Data (last 30 samples)

Station Number	Classification	Data Range	Range (FC/100mL)	GeoMean (FC/100mL)	Est 90th Percentile (FC/100mL)	Meets Standard
331	Conditionally Approved	7/8/2020 - 12/7/2022	1.7 - 110.0	3.5	14.4	Yes
333	Conditionally Approved	7/8/2020 - 12/7/2022	1.7 - 240.0	3.4	17.3	Yes
334	Conditionally Approved	7/8/2020 - 12/7/2022	1.7 - 79.0	7.4	32.3	Yes
335	Conditionally Approved	7/8/2020 - 12/7/2022	1.7 - 33.0	3.6	12.5	Yes
336	Conditionally Approved	6/11/2020 - 12/7/2022	1.7 - 350.0	4.3	23.4	Yes
337	Conditionally Approved	6/11/2020 - 12/7/2022	1.7 - 49.0	2.9	7.6	Yes
338	Conditionally Approved	6/11/2020 - 12/7/2022	1.7 - 130.0	3.0	10.6	Yes
339	Conditionally Approved	6/11/2020 - 12/7/2022	1.7 - 130.0	4.0	16.3	Yes
340	Conditionally Approved	6/11/2020 - 12/7/2022	1.7 - 110.0	4.7	20.2	Yes
342	Conditionally Approved	7/8/2020 - 12/7/2022	1.7 - 49.0	3.6	11.6	Yes
343	Conditionally Approved	7/8/2020 - 12/7/2022	1.7 - 49.0	3.2	10.7	Yes
344	Conditionally Approved	7/8/2020 - 12/7/2022	1.7 - 79.0	3.5	13.0	Yes
694	Restricted	6/11/2020 - 12/7/2022	1.7 - 540.0	6.3	38.6	Yes
772	Restricted	6/11/2020 - 12/7/2022	1.7 - 920.0	6.3	36.2	Yes

The standard for **Approved** shellfish growing waters is fecal coliform geometric mean not greater than 14 organisms / 100 mL with an estimated 90th percentile not greater than 43 organisms / 100 mL. The above table shows bacteriological results in relation to program standards.

\*\*The standard for **Restricted** shellfish growing classification is fecal coliform geometric mean not greater than 88 organisms / 100 mL with an estimated 90th percentile not greater than 260 organisms / 100 mL. The above table shows bacteriological results in relation to program standards \*\*

~Dataset includes 3-4 sampling events with 1" or greater rainfall 0-4 days prior to sampling~

## Burley Lagoon Water Quality Summary (January 2023)

**Table 2: Summary of Marine Water Data (30 samples)  
Collected 0 – 4 Days After < 1 – inch Rainfall in 24 hours**

Station Number	Classification	Data Range	Range (FC/100mL)	GeoMean (FC/100mL)	Est 90th Percentile (FC/100mL)	Meets Standard
331	Conditionally Approved	1/2/2020 - 12/7/2022	1.7 - 17.0	2.6	6.6	Yes
333	Conditionally Approved	1/2/2020 - 12/7/2022	1.7 - 110.0	2.6	7.8	Yes
334	Conditionally Approved	1/2/2020 - 12/7/2022	1.7 - 79.0	6.2	29.2	Yes
335	Conditionally Approved	1/2/2020 - 12/7/2022	1.7 - 23.0	2.9	9.1	Yes
336	Conditionally Approved	1/2/2020 - 12/7/2022	1.7 - 33.0	3.2	10.9	Yes
337	Conditionally Approved	1/2/2020 - 12/7/2022	1.7 - 7.8	2.6	4.8	Yes
338	Conditionally Approved	1/2/2020 - 12/7/2022	1.7 - 22.0	2.5	5.8	Yes
339	Conditionally Approved	1/2/2020 - 12/7/2022	1.7 - 17.0	3.3	9.7	Yes
340	Conditionally Approved	1/2/2020 - 12/7/2022	1.7 - 49.0	3.7	13.1	Yes
342	Conditionally Approved	1/2/2020 - 12/7/2022	1.7 - 11.0	3.0	7.2	Yes
343	Conditionally Approved	1/2/2020 - 12/7/2022	1.7 - 49.0	2.7	7.6	Yes
344	Conditionally Approved	1/2/2020 - 12/7/2022	1.7 - 23.0	2.8	8.0	Yes
694	Restricted	1/2/2020 - 12/7/2022	1.7 - 46.0	5.0	21.0	Yes
772	Restricted	1/2/2020 - 12/7/2022	1.7 - 33.0	4.8	18.1	Yes

The standard for approved shellfish growing waters is fecal coliform geometric mean not greater than 14 organisms / 100 mL with an estimated 90th percentile not greater than 43 organisms / 100 mL. The above table shows bacteriological results in relation to program standards.

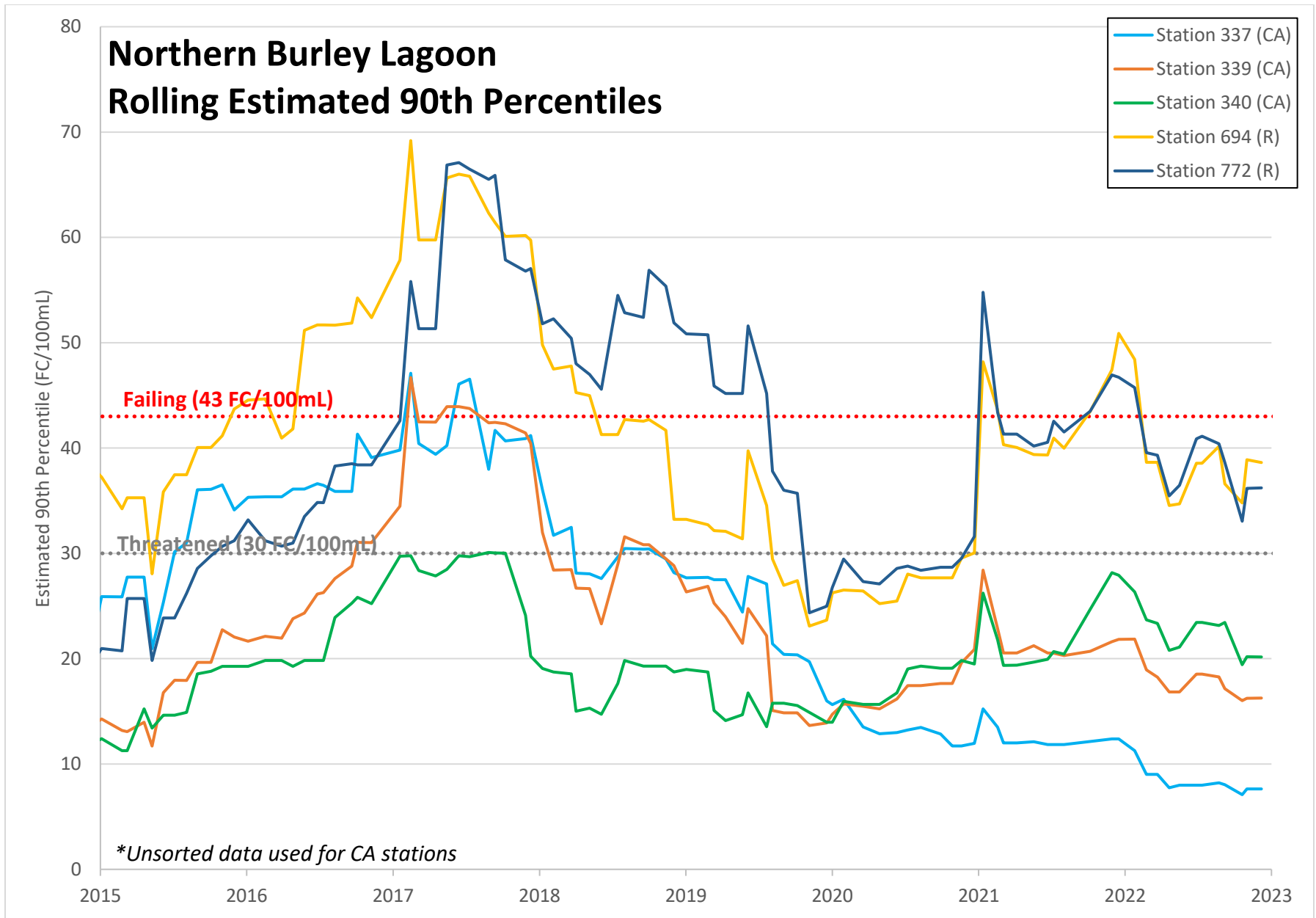
## Burley Lagoon Water Quality Summary (January 2023)

### Table 3: Change in Estimated 90<sup>th</sup> Percentiles at each Station Over Last Year to Current Period

Station Number	Classification	1 YEAR AGO Est 90th Percentile	2021 ANNUAL REPORT Est 90th Percentile	LAST 30 SAMPLES Est 90 <sup>th</sup> Percentile	Net Trend (>3 FC)
331	Conditionally Approved	13.1	13.1	14.4	
333	Conditionally Approved	19.6	19.6	17.3	
334	Conditionally Approved	32.2	32.2	32.3	
335	Conditionally Approved	13.1	13.1	12.5	
336	Conditionally Approved	25.8	25.8	23.4	
337	Conditionally Approved	12.4	12.4	7.6	Decrease
338	Conditionally Approved	16.2	16.2	10.6	Decrease
339	Conditionally Approved	21.8	21.8	16.3	Decrease
340	Conditionally Approved	27.9	27.9	20.2	Decrease
342	Conditionally Approved	15.1	15.1	11.6	Decrease
343	Conditionally Approved	11.7	11.7	10.7	
344	Conditionally Approved	15.6	15.6	13.0	
694	Restricted	50.9	50.9	38.6	Decrease
772	Restricted	46.7	46.7	36.2	Decrease

\*All values given in FC/100mL

# Burley Lagoon Water Quality Summary (January 2023)



# Burley Lagoon Water Quality Summary (January 2023)

