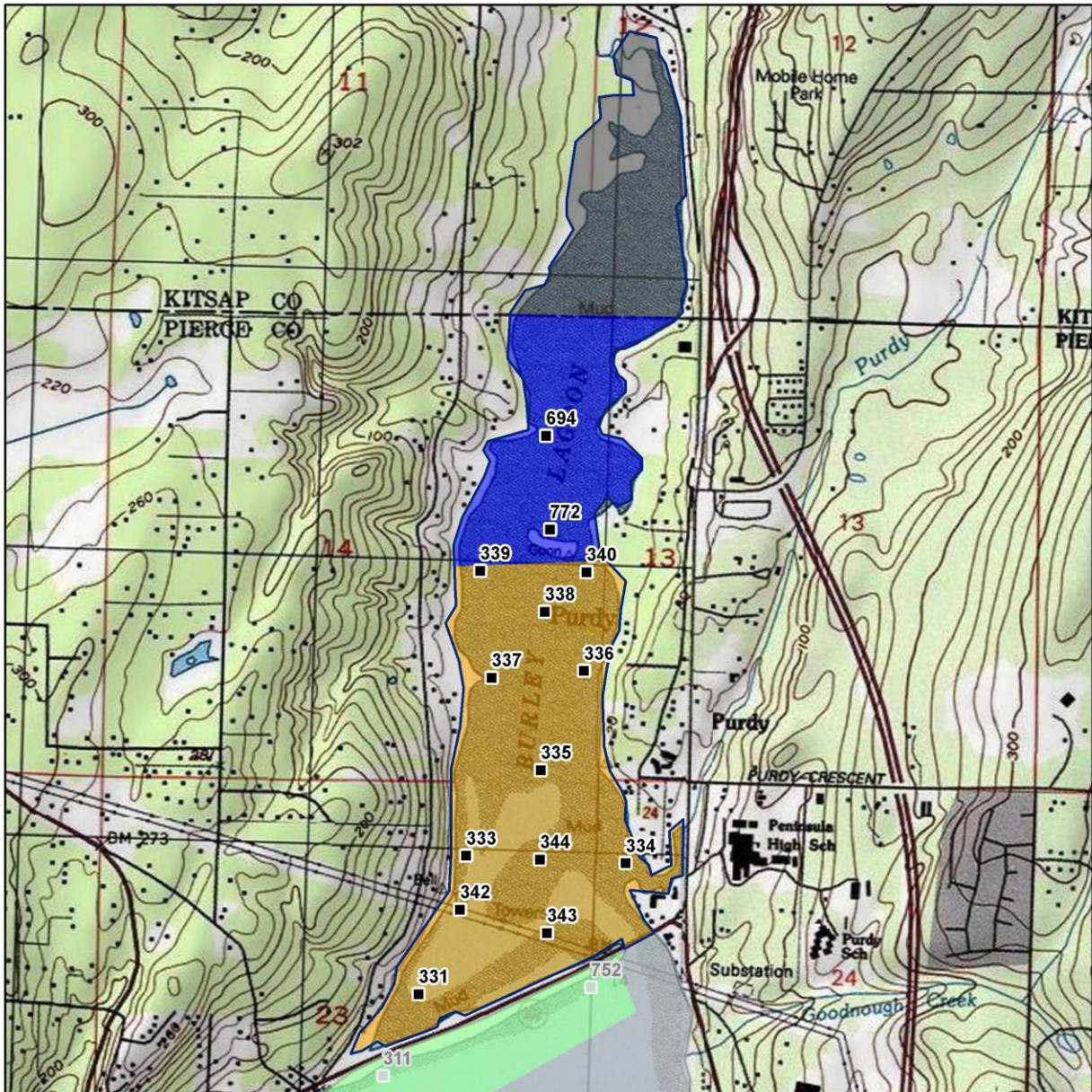
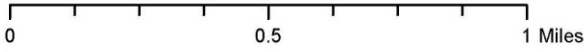
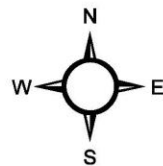


# Burley Lagoon



### Classification      Sampling Stations

- Approved
- Conditional
- Prohibited
- Restricted
- Unclassified



\* Some sampling stations are highlighted with grey box for ease of reading.

## Burley Lagoon

### Summary of All Marine Water Data (last 30 samples)

Station Number	Classification	Data Range	Range (FC/100ml)	GeoMean (FC/100mL)	Est 90th Percentile (FC/100mL)	Meets Standard
331	Conditionally Approved	9/3/2019 - 3/23/2022	1.7 - 49.0	3.3	10.0	Yes
333	Conditionally Approved	9/3/2019 - 3/23/2022	1.7 - 240.0	3.4	16.7	Yes
334	Conditionally Approved	9/3/2019 - 3/23/2022	1.7 - 79.0	5.8	26.3	Yes
335	Conditionally Approved	9/3/2019 - 3/23/2022	1.7 - 33.0	3.3	10.8	Yes
336	Conditionally Approved	8/6/2019 - 3/23/2022	1.7 - 350.0	4.2	22.7	Yes
337	Conditionally Approved	8/6/2019 - 3/23/2022	1.7 - 49.0	3.1	9.0	Yes
338	Conditionally Approved	8/6/2019 - 3/23/2022	1.7 - 130.0	3.0	11.2	Yes
339	Conditionally Approved	8/6/2019 - 3/23/2022	1.7 - 130.0	4.4	18.3	Yes
340	Conditionally Approved	8/6/2019 - 3/23/2022	1.7 - 110.0	4.7	23.4	Yes
342	Conditionally Approved	9/3/2019 - 3/23/2022	1.7 - 49.0	3.6	12.0	Yes
343	Conditionally Approved	9/3/2019 - 3/23/2022	1.7 - 49.0	3.1	9.5	Yes
344	Conditionally Approved	9/3/2019 - 3/23/2022	1.7 - 79.0	3.2	11.4	Yes
694	Restricted	8/6/2019 - 3/23/2022	1.7 - 540.0	6.6	38.7	Yes
772	Restricted	8/6/2019 - 3/23/2022	1.7 - 920.0	6.1	39.3	Yes

Dataset includes 3-4 sampling events with 1" or greater rainfall 0-4 days prior to sampling

The standard for **Approved** shellfish growing waters is fecal coliform geometric mean not greater than 14 organisms / 100 mL with an estimated 90th percentile not greater than 43 organisms / 100 mL. The above table shows bacteriological results in relation to program standards.

\*\*The standard for **Restricted** shellfish growing classification is fecal coliform geometric mean not greater than 88 organisms / 100 mL with an estimated 90th percentile not greater than 260 organisms / 100 mL. The above table shows bacteriological results in relation to program standards \*

**Burley Lagoon**  
**Summary of Marine Water Data (30 samples) Collected 0 – 4**  
**Days After < 1 – inch Rainfall in 24 hours**

Station Number	Classification	Data Range	Range (FC/100mL)	GeoMean (FC/100mL)	Est 90th Percentile (FC/100mL)	Meets Standard
331	Conditionally Approved	5/23/2019 - 3/23/2022	1.7 - 23.0	3.3	9.3	Y
333	Conditionally Approved	5/23/2019 - 3/23/2022	1.7 - 110.0	2.9	9.6	Y
334	Conditionally Approved	5/23/2019 - 3/23/2022	1.7 - 79.0	6.2	28.9	Y
335	Conditionally Approved	5/23/2019 - 3/23/2022	1.7 - 23.0	3.0	9.3	Y
336	Conditionally Approved	5/23/2019 - 3/23/2022	1.7 - 33.0	3.4	11.3	Y
337	Conditionally Approved	5/23/2019 - 3/23/2022	1.7 - 33.0	3.0	8.4	Y
338	Conditionally Approved	5/23/2019 - 3/23/2022	1.7 - 49.0	3.1	10.7	Y
339	Conditionally Approved	5/23/2019 - 3/23/2022	1.7 - 31.0	3.9	12.5	Y
340	Conditionally Approved	5/23/2019 - 3/23/2022	1.7 - 49.0	4.2	16.5	Y
342	Conditionally Approved	5/23/2019 - 3/23/2022	1.7 - 23.0	3.2	8.8	Y
343	Conditionally Approved	5/23/2019 - 3/23/2022	1.7 - 49.0	3.2	9.5	Y
344	Conditionally Approved	5/23/2019 - 3/23/2022	1.7 - 26.0	3.1	10.4	Y
694	Restricted	5/23/2019 - 3/23/2022	1.7 - 110.0	6.1	28.8	Y
772	Restricted	5/23/2019 - 3/23/2022	1.7 - 49.0	5.1	21.0	Y

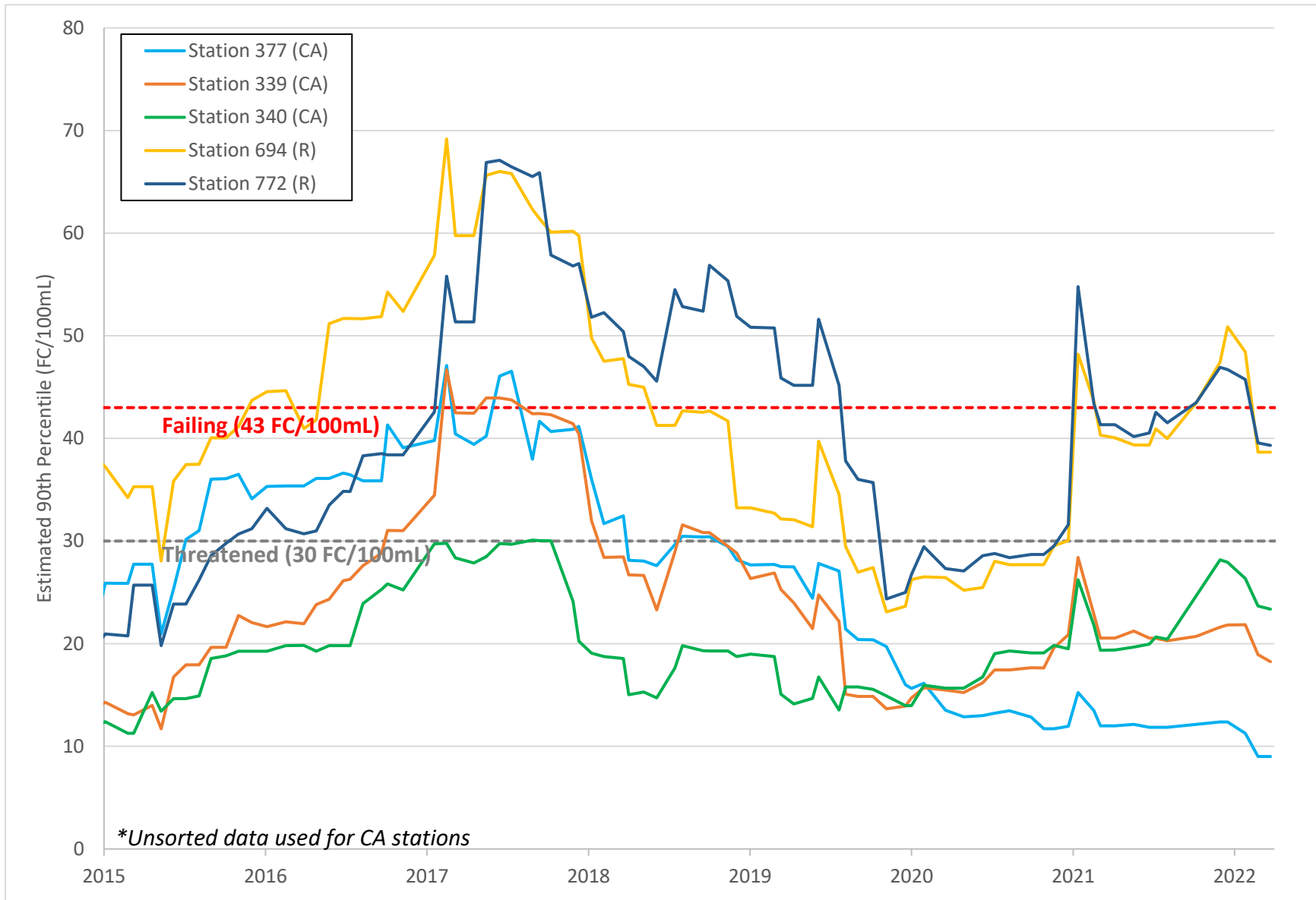
The standard for approved shellfish growing waters is fecal coliform geometric mean not greater than 14 organisms / 100 mL with an estimated 90th percentile not greater than 43 organisms / 100 mL. The above table shows bacteriological results in relation to program standards.

**Burley Lagoon**  
**Change in Estimated 90<sup>th</sup> Percentile at each Station from**  
**2020 to 2021 Annual Report Periods**

Station Number	Classification	ANNUAL REPORT Est 90th Percentile (End of 2021)	CURRENT Est 90th Percentile	Change in Est 90th Percentile	>3 Decrease or Increase
331	Conditionally Approved	13.1	10.0	-3.1	Decrease
333	Conditionally Approved	19.6	16.7	-2.9	
334	Conditionally Approved	32.2	26.3	-5.9	Decrease
335	Conditionally Approved	13.1	10.8	-2.3	
336	Conditionally Approved	25.8	22.7	-3.1	Decrease
337	Conditionally Approved	12.4	9.0	-3.4	Decrease
338	Conditionally Approved	16.2	11.2	-5.0	Decrease
339	Conditionally Approved	21.8	18.3	-3.5	Decrease
340	Conditionally Approved	27.9	23.4	-4.5	Decrease
342	Conditionally Approved	15.1	12.0	-3.1	Decrease
343	Conditionally Approved	11.7	9.5	-2.2	
344	Conditionally Approved	15.6	11.4	-4.2	Decrease
694	Restricted	50.9	38.7	-12.2	Decrease
772	Restricted	46.7	39.3	-7.4	Decrease

\*All values given in FC/100mL

# Fecal Coliform Rolling Estimated 90<sup>th</sup> Percentiles of Northern Burley Lagoon



# Fecal Coliform Rolling Estimated 90<sup>th</sup> Percentiles of Southern Burley Lagoon

