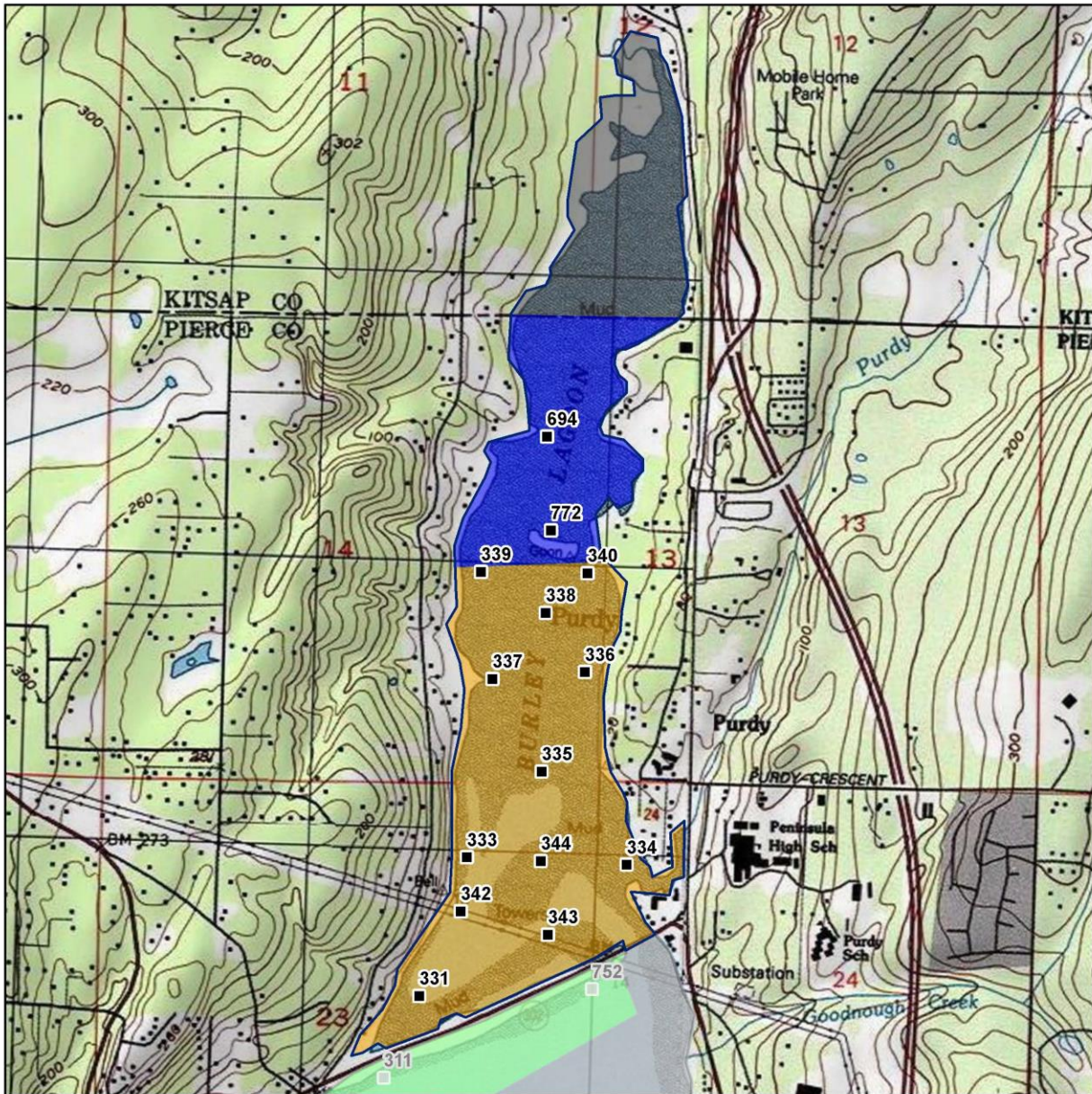
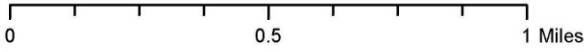
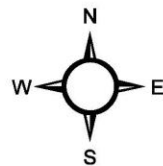


# Burley Lagoon



## Classification      Sampling Stations

- Approved
- Conditional
- Prohibited
- Restricted
- Unclassified



\* Some sampling stations are highlighted with grey box for ease of reading.

## Burley Lagoon

### Summary of All Marine Water Data (last 30 samples)

Station Number	Classification	Data Range	Range (FC/100ml)	GeoMean (FC/100mL)	Est 90th Percentile (FC/100mL)	Meets Standard
331	Conditionally Approved	1/2/2020 - 7/12/2022	1.7 - 49.0	3.2	10.5	Yes
333	Conditionally Approved	1/2/2020 - 7/12/2022	1.7 - 240.0	3.5	17.4	Yes
334	Conditionally Approved	1/2/2020 - 7/12/2022	1.7 - 79.0	6.3	29.2	Yes
335	Conditionally Approved	1/2/2020 - 7/12/2022	1.7 - 33.0	3.5	11.9	Yes
336	Conditionally Approved	12/19/2019 - 7/12/2022	1.7 - 350.0	4.6	25.2	Yes
337	Conditionally Approved	12/19/2019 - 7/12/2022	1.7 - 49.0	3.0	8.0	Yes
338	Conditionally Approved	12/19/2019 - 7/12/2022	1.7 - 130.0	2.9	10.0	Yes
339	Conditionally Approved	12/19/2019 - 7/12/2022	1.7 - 130.0	4.5	18.5	Yes
340	Conditionally Approved	12/19/2019 - 7/12/2022	1.7 - 110.0	4.9	23.4	Yes
342	Conditionally Approved	1/2/2020 - 7/12/2022	1.7 - 49.0	4.0	13.6	Yes
343	Conditionally Approved	1/2/2020 - 7/12/2022	1.7 - 49.0	3.1	9.8	Yes
344	Conditionally Approved	1/2/2020 - 7/12/2022	1.7 - 79.0	3.4	12.6	Yes
694	Restricted	12/19/2019 - 7/12/2022	1.7 - 540.0	6.8	38.6	Yes
772	Restricted	12/19/2019 - 7/12/2022	1.7 - 920.0	6.9	41.1	Yes

Dataset includes 4 sampling events with 1" or greater rainfall 0-4 days prior to sampling

The standard for **Approved** shellfish growing waters is fecal coliform geometric mean not greater than 14 organisms / 100 mL with an estimated 90th percentile not greater than 43 organisms / 100 mL. The above table shows bacteriological results in relation to program standards.

\*\*The standard for **Restricted** shellfish growing classification is fecal coliform geometric mean not greater than 88 organisms / 100 mL with an estimated 90th percentile not greater than 260 organisms / 100 mL. The above table shows bacteriological results in relation to program standards \*

**Burley Lagoon**  
**Summary of Marine Water Data (30 samples) Collected 0 – 4**  
**Days After < 1 – inch Rainfall in 24 hours**

Station Number	Classification	Data Range	Range (FC/100mL)	GeoMean (FC/100mL)	Est 90th Percentile (FC/100mL)	Meets Standard
331	Conditionally Approved	9/3/2019 - 7/12/2022	1.7 - 17.0	2.8	7.3	Y
333	Conditionally Approved	9/3/2019 - 7/12/2022	1.7 - 110.0	2.6	7.9	Y
334	Conditionally Approved	9/3/2019 - 7/12/2022	1.7 - 79.0	5.6	26.6	Y
335	Conditionally Approved	9/3/2019 - 7/12/2022	1.7 - 23.0	2.9	8.5	Y
336	Conditionally Approved	9/3/2019 - 7/12/2022	1.7 - 33.0	3.3	10.9	Y
337	Conditionally Approved	9/3/2019 - 7/12/2022	1.7 - 7.8	2.5	4.6	Y
338	Conditionally Approved	9/3/2019 - 7/12/2022	1.7 - 22.0	2.5	5.8	Y
339	Conditionally Approved	9/3/2019 - 7/12/2022	1.7 - 17.0	3.4	10.0	Y
340	Conditionally Approved	9/3/2019 - 7/12/2022	1.7 - 49.0	3.7	13.1	Y
342	Conditionally Approved	9/3/2019 - 7/12/2022	1.7 - 11.0	2.9	7.0	Y
343	Conditionally Approved	9/3/2019 - 7/12/2022	1.7 - 49.0	2.8	7.8	Y
344	Conditionally Approved	9/3/2019 - 7/12/2022	1.7 - 23.0	2.8	7.9	Y
694	Restricted	9/3/2019 - 7/12/2022	1.7 - 46.0	5.2	20.9	Y
772	Restricted	9/3/2019 - 7/12/2022	1.7 - 33.0	4.8	17.5	Y

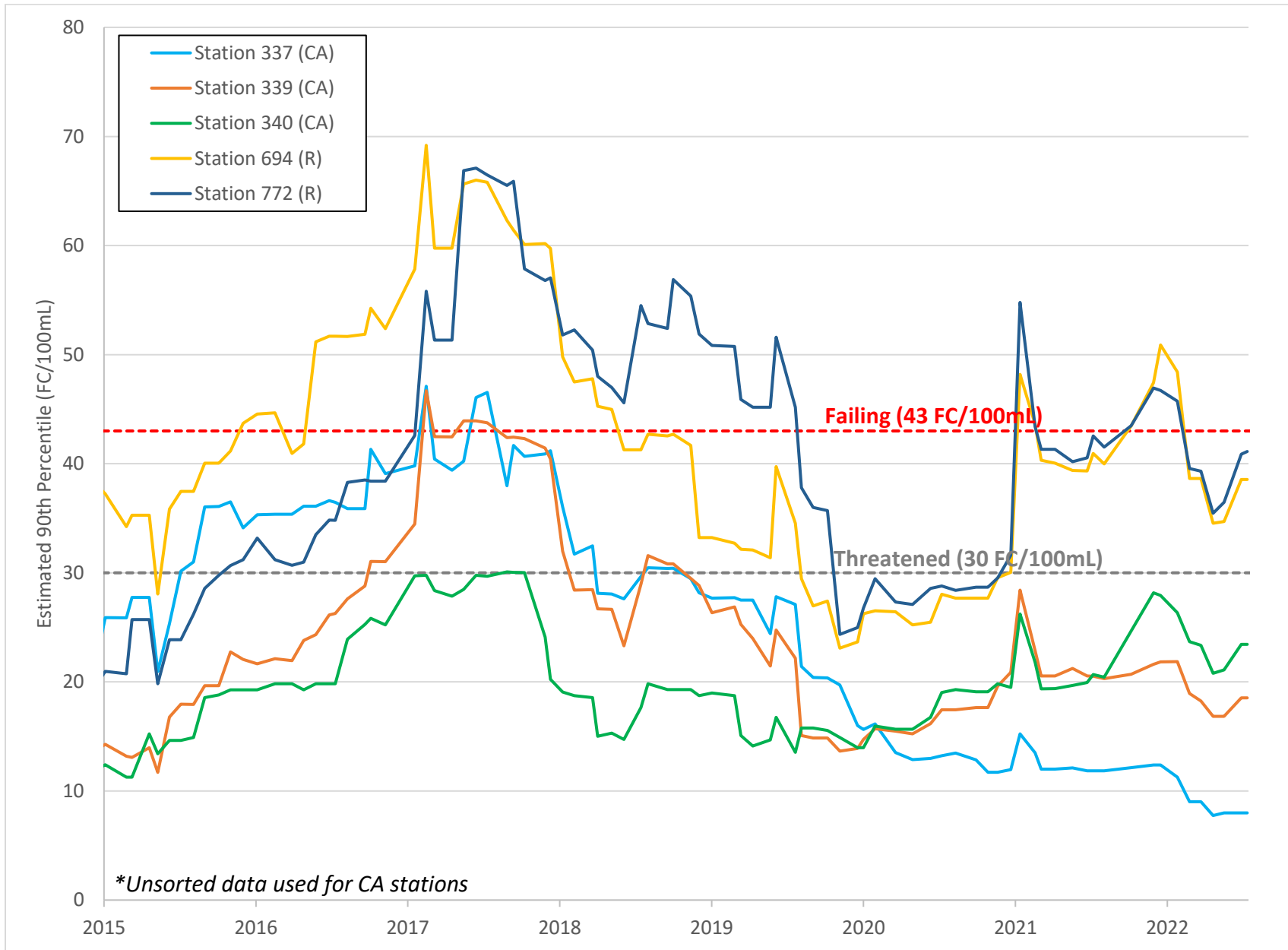
The standard for approved shellfish growing waters is fecal coliform geometric mean not greater than 14 organisms / 100 mL with an estimated 90th percentile not greater than 43 organisms / 100 mL. The above table shows bacteriological results in relation to program standards.

**Burley Lagoon**  
**Change in Estimated 90<sup>th</sup> Percentile at each Station from**  
**2020 to 2021 Annual Report Periods**

Station Number	Classification	ANNUAL REPORT Est 90th Percentile (End of 2021)	CURRENT Est 90th Percentile	Change in Est 90th Percentile	>3 Decrease or Increase
331	Conditionally Approved	13.1	10.5	-2.6	
333	Conditionally Approved	19.6	17.4	-2.2	
334	Conditionally Approved	32.2	29.2	-3.0	Decrease
335	Conditionally Approved	13.1	11.9	-1.2	
336	Conditionally Approved	25.8	25.2	-0.6	
337	Conditionally Approved	12.4	8.0	-4.4	Decrease
338	Conditionally Approved	16.2	10.0	-6.2	Decrease
339	Conditionally Approved	21.8	18.5	-3.3	Decrease
340	Conditionally Approved	27.9	23.4	-4.5	Decrease
342	Conditionally Approved	15.1	13.6	-1.5	
343	Conditionally Approved	11.7	9.8	-1.9	
344	Conditionally Approved	15.6	12.6	-3.0	Decrease
694	Restricted	50.9	38.6	-12.3	Decrease
772	Restricted	46.7	41.1	-5.6	Decrease

\*All values given in FC/100mL

# Fecal Coliform Rolling Estimated 90<sup>th</sup> Percentiles of Northern Burley Lagoon



# Fecal Coliform Rolling Estimated 90<sup>th</sup> Percentiles of Southern Burley Lagoon

