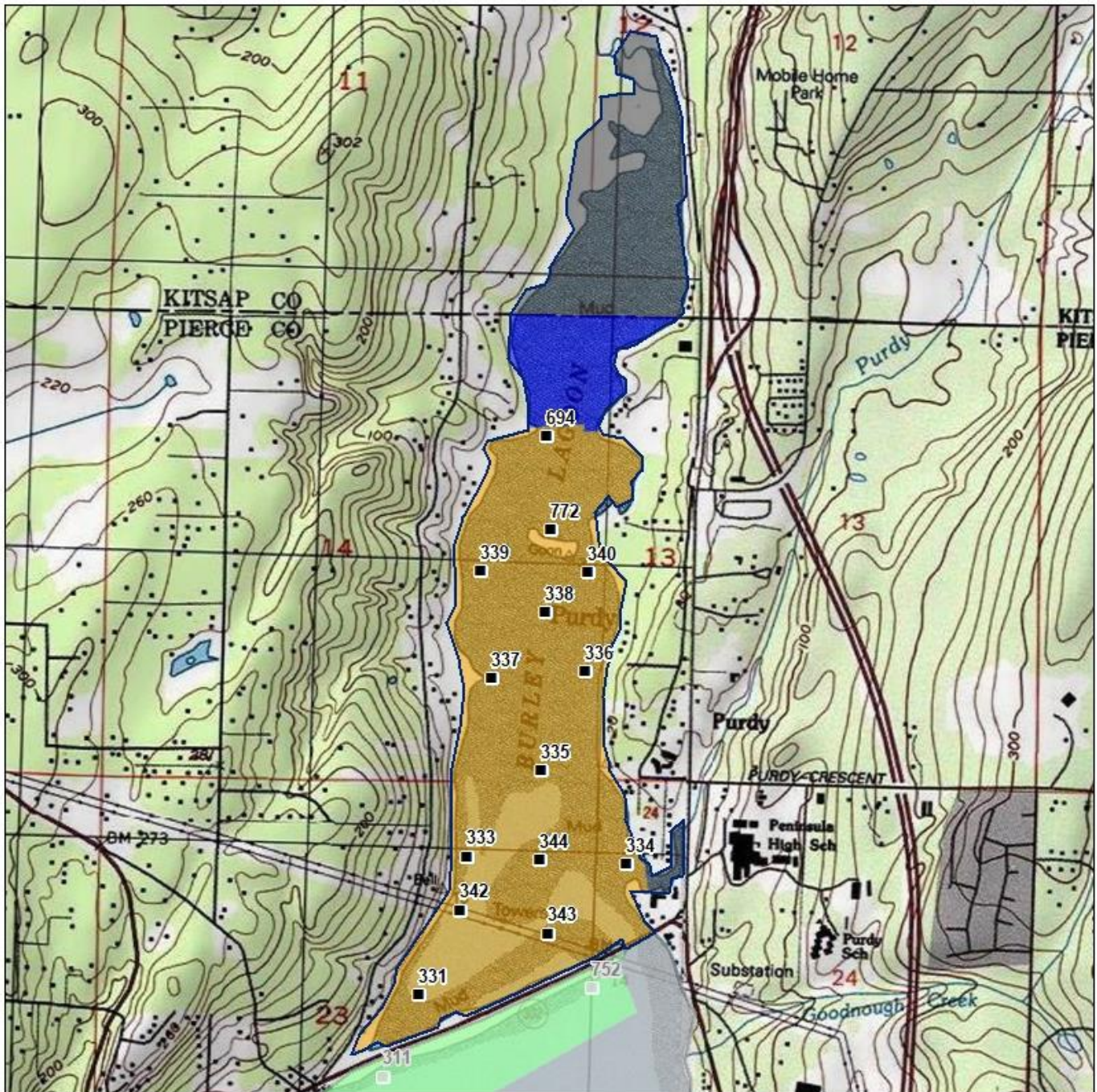
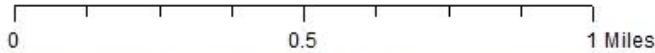


# Burley Lagoon Water Quality Summary (November 2023)

 Burley Lagoon



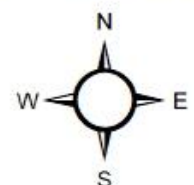
Date Updated: 7/6/2023



### Classification

- Approved
- Conditional
- Prohibited
- Restricted
- Unclassified

### Sampling Stations



\* Some sampling stations are highlighted with grey box for ease of reading.

## Burley Lagoon Water Quality Summary (November 2023)

### Table 1: Summary of Marine Water Data (last 30 samples)

Station Number	Classification	Data Range	Range (FC/100mL)	GeoMean (FC/100mL)	Est 90th Percentile (FC/100mL)	Meets Standard
331	Conditionally Approved	5/18/2021 - 10/24/2023	1.7 - 110.0	3.7	16.4	Yes
333	Conditionally Approved	5/18/2021 - 10/24/2023	1.7 - 110.0	2.9	11.1	Yes
334	Conditionally Approved	5/18/2021 - 10/24/2023	1.7 - 79.0	6.4	26.2	Yes
335	Conditionally Approved	5/18/2021 - 10/24/2023	1.7 - 23.0	3.1	9.1	Yes
336	Conditionally Approved	4/6/2021 - 10/24/2023	1.7 - 23.0	3.5	12.4	Yes
337	Conditionally Approved	4/6/2021 - 10/24/2023	1.7 - 7.8	2.4	4.5	Yes
338	Conditionally Approved	4/6/2021 - 10/24/2023	1.7 - 33.0	3.1	9.0	Yes
339	Conditionally Approved	4/6/2021 - 10/24/2023	1.7 - 49.0	3.6	13.0	Yes
340	Conditionally Approved	4/6/2021 - 10/24/2023	1.7 - 49.0	4.0	14.2	Yes
342	Conditionally Approved	5/18/2021 - 10/24/2023	1.7 - 49.0	3.7	12.6	Yes
343	Conditionally Approved	5/18/2021 - 10/24/2023	1.7 - 49.0	3.0	9.4	Yes
344	Conditionally Approved	5/18/2021 - 10/24/2023	1.7 - 23.0	3.0	8.8	Yes
694	Conditionally Approved	4/6/2021 - 10/24/2023	1.7 - 46.0	4.8	20.7	Yes
772	Conditionally Approved	4/6/2021 - 10/24/2023	1.7 - 33.0	5.4	20.5	Yes

The standard for **Approved** shellfish growing waters is fecal coliform geometric mean not greater than 14 organisms / 100 mL with an estimated 90th percentile not greater than 43 organisms / 100 mL. The above table shows bacteriological results in relation to program standards.

Data from 10/24/2023 sampling has not been through QA/QC yet and is subject to revision.

~Dataset includes 1-2 sampling events with 1" or greater rainfall 0-4 days prior to sampling~.



## Burley Lagoon Water Quality Summary (November 2023)

**Table 2: Summary of Marine Water Data (30 samples)  
Collected 0 – 4 Days After < 1 – inch Rainfall in 24 hours**

Station Number	Classification	Data Range	Range (FC/100mL)	GeoMean (FC/100mL)	Est 90th Percentile (FC/100mL)	Meets Standard
331	Conditionally Approved	3/4/2021 - 10/24/2023	1.7 - 23.0	2.9	8.4	Yes
333	Conditionally Approved	3/4/2021 - 10/24/2023	1.7 - 110.0	2.7	9.1	Yes
334	Conditionally Approved	3/4/2021 - 10/24/2023	1.7 - 79.0	5.8	25.3	Yes
335	Conditionally Approved	3/4/2021 - 10/24/2023	1.7 - 23.0	2.8	8.3	Yes
336	Conditionally Approved	3/4/2021 - 10/24/2023	1.7 - 23.0	3.3	10.5	Yes
337	Conditionally Approved	3/4/2021 - 10/24/2023	1.7 - 7.8	2.3	4.1	Yes
338	Conditionally Approved	3/4/2021 - 10/24/2023	1.7 - 33.0	3.0	8.5	Yes
339	Conditionally Approved	3/4/2021 - 10/24/2023	1.7 - 49.0	3.5	12.8	Yes
340	Conditionally Approved	3/4/2021 - 10/24/2023	1.7 - 49.0	3.8	13.6	Yes
342	Conditionally Approved	3/4/2021 - 10/24/2023	1.7 - 33.0	3.3	9.6	Yes
343	Conditionally Approved	3/4/2021 - 10/24/2023	1.7 - 49.0	2.8	8.3	Yes
344	Conditionally Approved	3/4/2021 - 10/24/2023	1.7 - 23.0	2.7	7.5	Yes
694	Conditionally Approved	3/4/2021 - 10/24/2023	1.7 - 46.0	4.4	17.8	Yes
772	Conditionally Approved	3/4/2021 - 10/24/2023	1.7 - 33.0	5.0	18.4	Yes

The standard for approved shellfish growing waters is fecal coliform geometric mean not greater than 14 organisms / 100 mL with an estimated 90th percentile not greater than 43 organisms / 100 mL. The above table shows bacteriological results in relation to program standards.

Data from 10/24/2023 sampling has not been through QA/QC yet and is subject to revision.

## Burley Lagoon Water Quality Summary (November 2023)

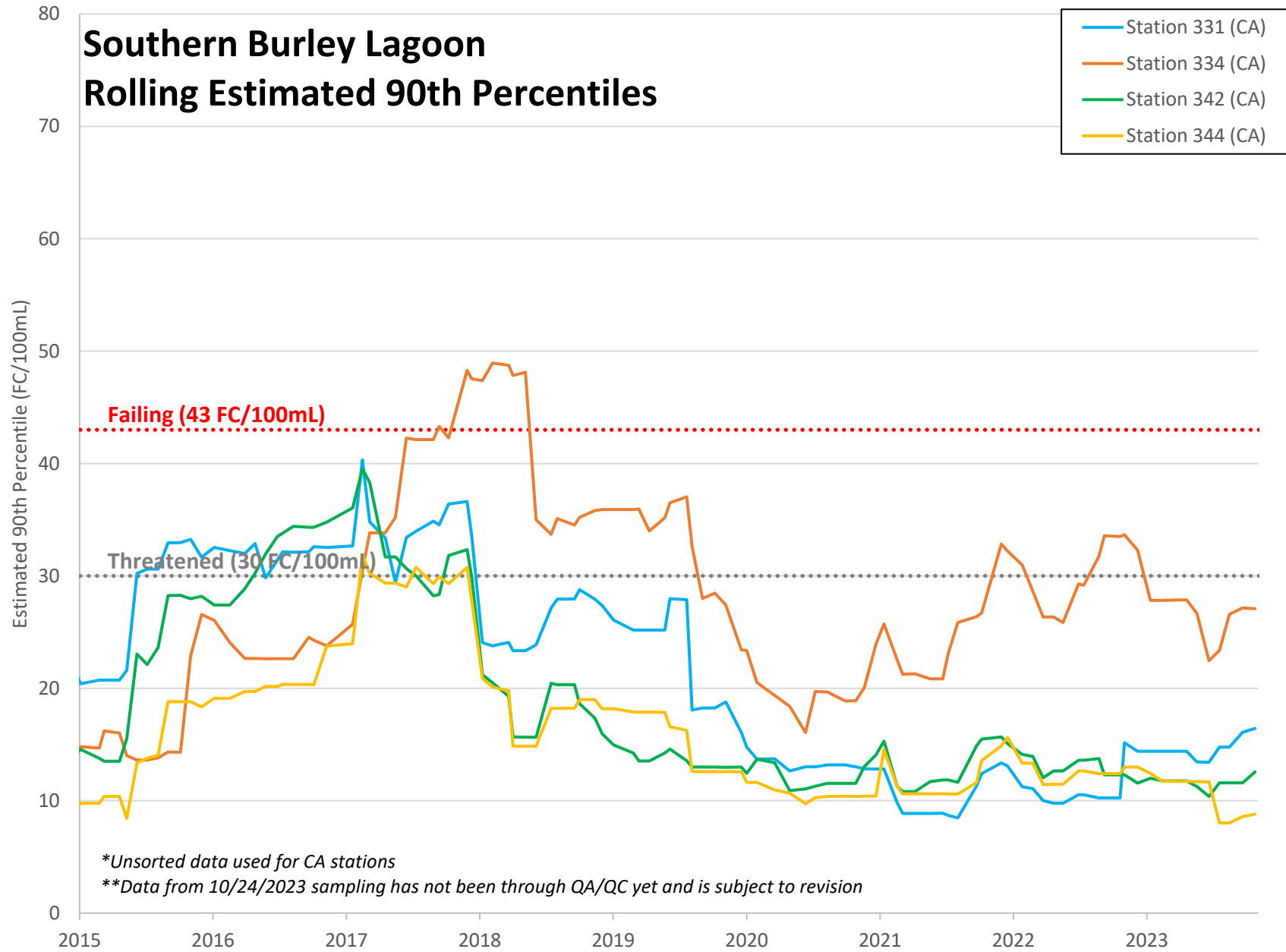
### Table 3: Change in Estimated 90<sup>th</sup> Percentiles at each Station Over Last Year to Current Period

Station Number	Classification	1 YEAR AGO Est 90th Percentile	2022 ANNUAL REPORT Est 90th Percentile	LAST 30 SAMPLES Est 90 <sup>th</sup> Percentile	Net Trend (>3 FC)
331	Conditionally Approved	15.2	14.4	16.4	
333	Conditionally Approved	17.4	17.3	11.1	Decrease
334	Conditionally Approved	33.7	32.3	26.2	Decrease
335	Conditionally Approved	12.5	12.5	9.1	Decrease
336	Conditionally Approved	23.4	23.4	12.4	Decrease
337	Conditionally Approved	7.6	7.6	4.5	Decrease
338	Conditionally Approved	10.6	10.6	9.0	
339	Conditionally Approved	16.2	16.3	13.0	Decrease
340	Conditionally Approved	20.2	20.2	14.2	Decrease
342	Conditionally Approved	12.3	11.6	12.6	
343	Conditionally Approved	10.9	10.7	9.4	
344	Conditionally Approved	13.0	13.0	8.8	Decrease
694	Conditionally Approved	38.9	38.6	20.7	Decrease
772	Conditionally Approved	36.2	36.2	20.5	Decrease

\*All values given in FC/100mL

# Burley Lagoon Water Quality Summary (November 2023)

## Southern Burley Lagoon Rolling Estimated 90th Percentiles



# Burley Lagoon Water Quality Summary (November 2023)

## Northern Burley Lagoon Rolling Estimated 90th Percentiles

